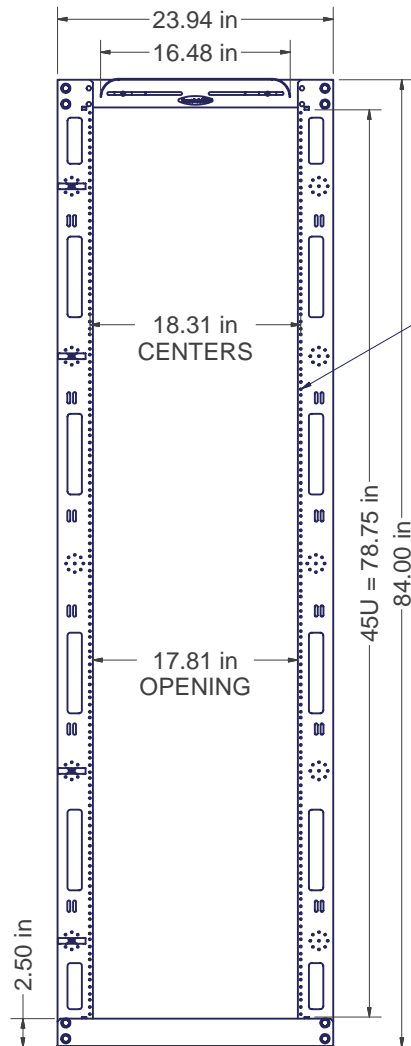


Strandit 85 Assembly Instructions

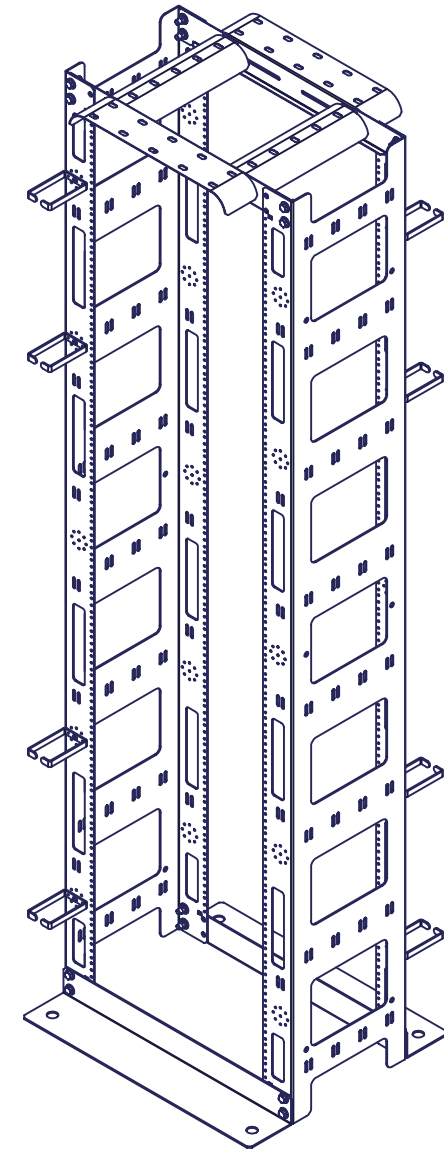
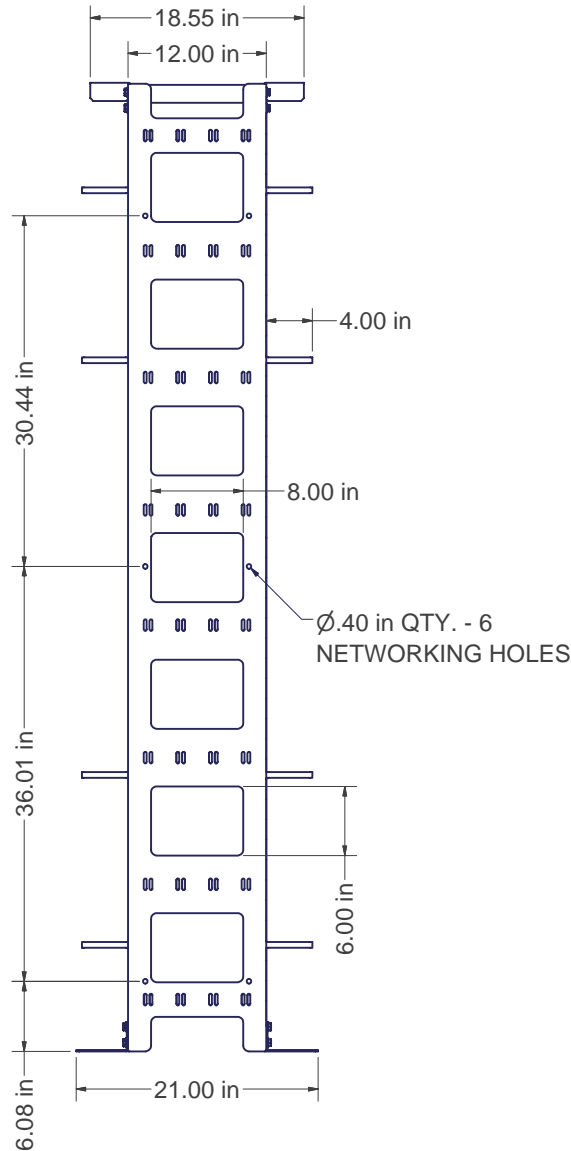
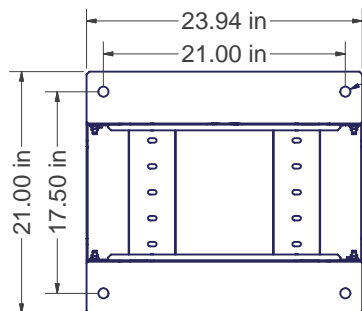


TAPPED HOLES
#12-24 UNC - 2B

18.31 in
CENTERS

17.81 in
OPENING

Ø.88 in MOUNTING
HOLES (4)



INTERPRET DRAWING PER ASME Y14.5M-1994
DIMENSIONAL LIMITS APPLY AFTER APPLICATION OF FINISH
DRAWING NOT TO SCALE
TOLERANCE UNLESS OTHERWISE NOTED:
ANGULAR +/- 1°
.XXXX +/- .010
.XXX +/- .015
.XX +/- .030
.X FOR REF. ONLY



THIRD ANGLE
PROJECTION

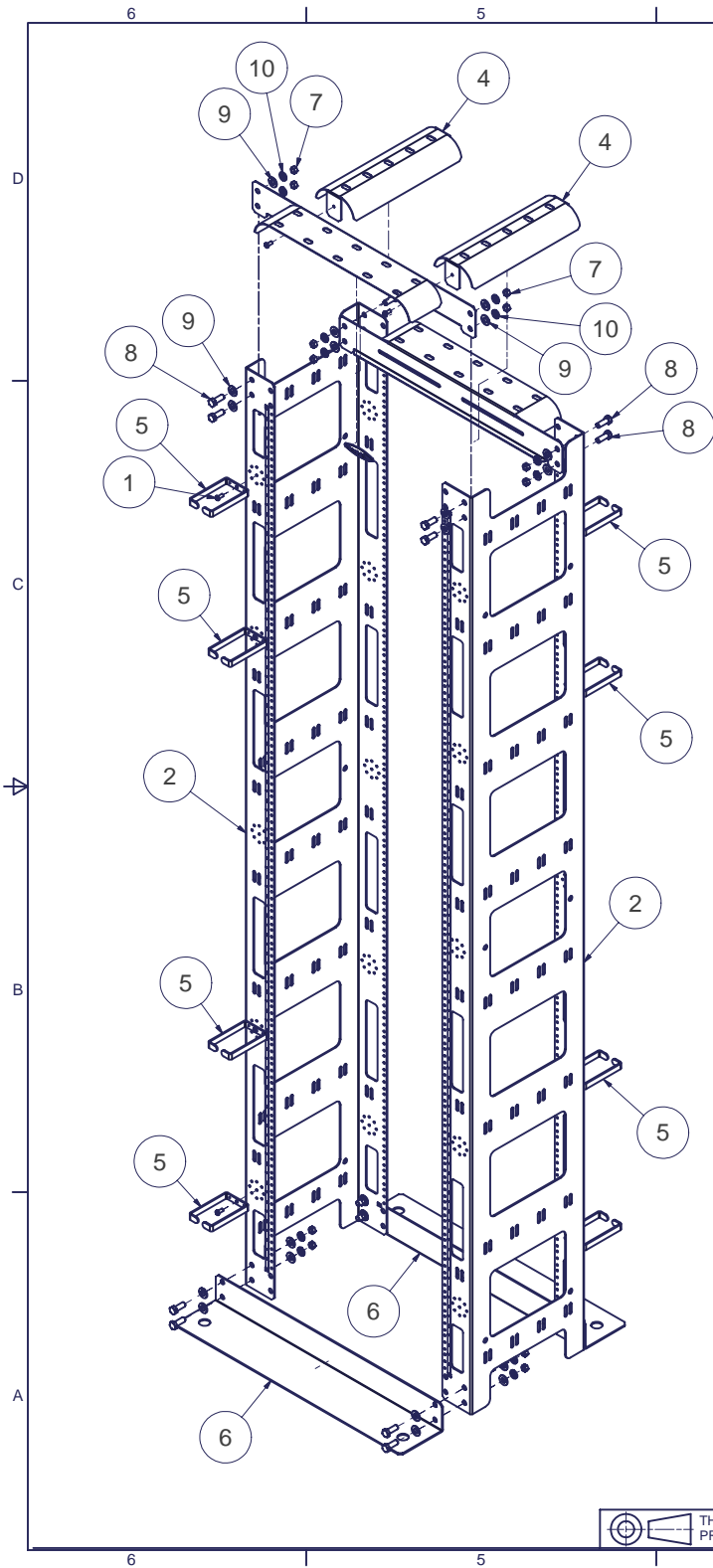
UNLESS OTHERWISE SPECIFIED
ALL DIMENSIONS ARE IN INCHES

NOTICE:

Use of this document is subject to a confidentiality and nondisclosure agreement with Rackit Technology Corporation ("Rackit") and may not be reproduced, disclosed or utilized in whole or in part without prior written authorization from Rackit.

PART NUMBER:	RCT-SM85
QTY PER UNIT:	1
MATERIAL TYPE:	-
MATERIAL GAUGE:	-
FINISH:	-
DRAWN	DATE
JL	9/20/2007
CHECKED & APP.	DATE
WSS	9-20-07

TITLE	INSTRUCTION SHEET FOR STRANDIT 85		
	Rackit Technology Corporation		
	PHONE: 212-679-0050 FAX: 212-679-0040 E-MAIL: support@rackittechnology.com		
DWG NO:	REV	SHEET: 1 OF 2	
I005977	0		



TOOLS REQUIRED:
(2) 9/16" Sockets or Wrenches,
Level or Carpenter Square

Bill of Material		
ITEM	QTY	DESCRIPTION
1	12	SCREW, 12-24x1/2" PH PAN TYPE 23 BLACK OXIDE/WAX RoHS
2	2	UPRIGHT CHANNEL
3	2	CROSS BRACE, WATERFALL EDGE
4	2	CENTER WATERFALL BRACKET, ADJUSTABLE
5	8	CABLE RING
6	2	FLOOR MOUNTING BRACKET
7	16	NUT, 3/8"-16, HEX, STEEL, BLACK
8	16	BOLT, 3/8"-16 X 1" HEX HD, GR 2, STEEL, BLACK
9	32	WASHER, 3/8" FLAT, STEEL, BLACK
10	16	WASHER, 3/8" SPLIT LOCK, STEEL, BLACK

STEP-1)

INSTALLING FRONT WATERFALL CROSSBRACE & FLOOR BRACKET.

A. Lay Upright Channels on edge and open sides of the channel face each other.

B. Align thru holes in Cross Brace Waterfall Edge behind the top thru holes in the Upright Channels. Install (6) 3/8" Hex Head Bolts, (12) 3/8" Flat Washers, (6) 3/8" Lock Washers, (6) 3/8" Hex Nuts. (finger tight).

C. Align thru holes in Floor Mounting Bracket in front of the bottom thru holes in the Upright Channels. Install same amount of hardware. (finger tight).

STEP-2)

INSTALLING REAR CROSS BRACE & FLOOR BRACKET.

A. Align thru holes in Floor Mounting Bracket in front of the bottom thru holes in the Upright Channels. Install same amount of hardware. (finger tight).

B. Install Center Waterfall Brackets (2) to the Cross Brace with (1) #12-24 Pan Head Screw per bracket thru the slots in the Cross Brace. **MUST BE INSTALLED PRIOR TO INSTALLING REAR CROSS BRACE ONTO UPRIGHT CHANNELS.**

C. Align thru holes in Cross Brace behind the top thru holes in the Upright Channels. Install (6) 3/8" Hex Head Bolts, (12) 3/8" Flat Washers, (6) 3/8" Lock Washers, (6) 3/8" Hex Nuts. (finger tight).

STEP-3)

FINAL TIGHTENING.

A. Stand rack upright. Square unit using Level or Carpenter Square. Tighten all bolts using 9/16" sockets and or wrenchs.

STEP-4)

SECURE RACK TO FLOOR.

A. All racks should be bolted to the floor, or to an equally stabilizing & secure surface prior to any equipment installation.

STEP-5)

INSTALLING CABLE RINGS

A. Align the pins on the rear of the Cable Rings, in any of the 16 mounting locations per Upright Channel and at any 45 degree increment of rotation using (1) #12-24 Pan Head Screw in the center.

INTERPRET DRAWING PER ASME Y14.5M-1994

DIMENSIONAL LIMITS APPLY
AFTER APPLICATION OF FINISH

DRAWING NOT TO SCALE

TOLERANCE UNLESS OTHERWISE NOTED:

ANGULAR +/- 1°

.XXXX +/- .010

.XXX +/- .015

.XX +/- .030

.X FOR REF. ONLY

UNLESS OTHERWISE SPECIFIED
ALL DIMENSIONS ARE IN INCHES

NOTICE:

Use of this document is subject to a confidentiality and nondisclosure agreement with Rackit Technology Corporation ("Rackit") and may not be reproduced, disclosed or utilized in whole or in part without prior written authorization from Rackit.

PART NUMBER:

RCT-SM85

QTY PER UNIT:

1

MATERIAL TYPE:

-

MATERIAL GAUGE:

-

FINISH:

-

DRAWN

DATE

9/20/2007

CHECKED & APP.

DATE

9-20-07

WSS

TITLE

INSTRUCTION SHEET FOR STRANDIT 85

Rackit Technology Corporation

PHONE: 212-679-0050 FAX: 212-679-0040

E-MAIL: support@rackittechnology.com

DWG NO:

I005977

REV

0

SHEET: 2 OF 2